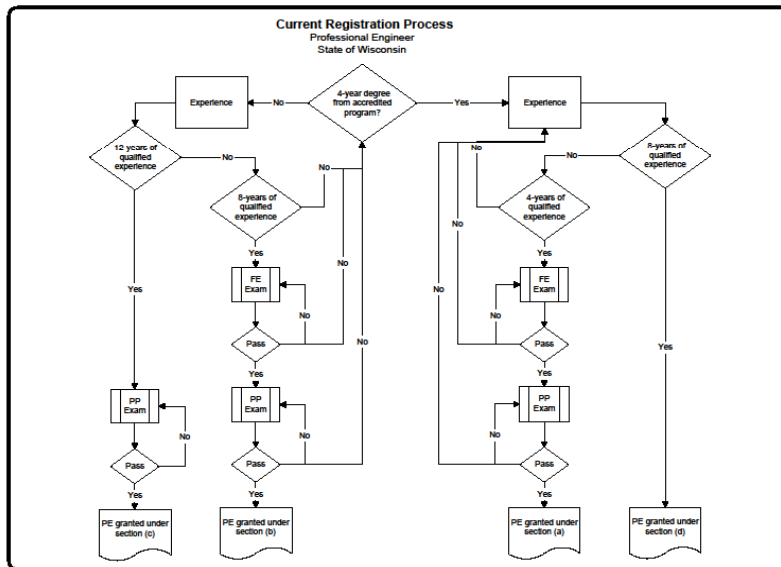


2010 WSPE Discovery Conference April 22, 2010

P.E. Licensure Legislation Update

by Glen R. Schwalbach, P.E.

Current Law/Regulations



Neighboring States' Licensure Requirements
Illinois, Indiana, Iowa, Michigan and Minnesota

- Education: 4-year engineering degree ABET-accredited or equivalent
- Experience: 4 years
- Exam: 8-hour Fundamentals and 8-hour Principles and Practices
- Note: Some experience variations depending on degree level

Wisconsin Legislation History

Sausage-making or
harnessing fleas to pull a load of manure

- 2-13-07 AB 69 introduced
- 5-02-07 Assembly hearing
- 1-15-08 Passed Assembly
- 2-27-08 Senate hearing
- 3-05-08 Reported out of committee
- 3-21-08 Failed to get scheduled

Still got a load of manure and
looking for more fleas

- 06-02-09 AB 288 introduced
- 10-14-09 Assembly hearing
- 10-29-09 Assembly passed
- 03-16-10 Senate hearing
- 04-09-10 Reported out of committee
- 04-22-10 TBA